

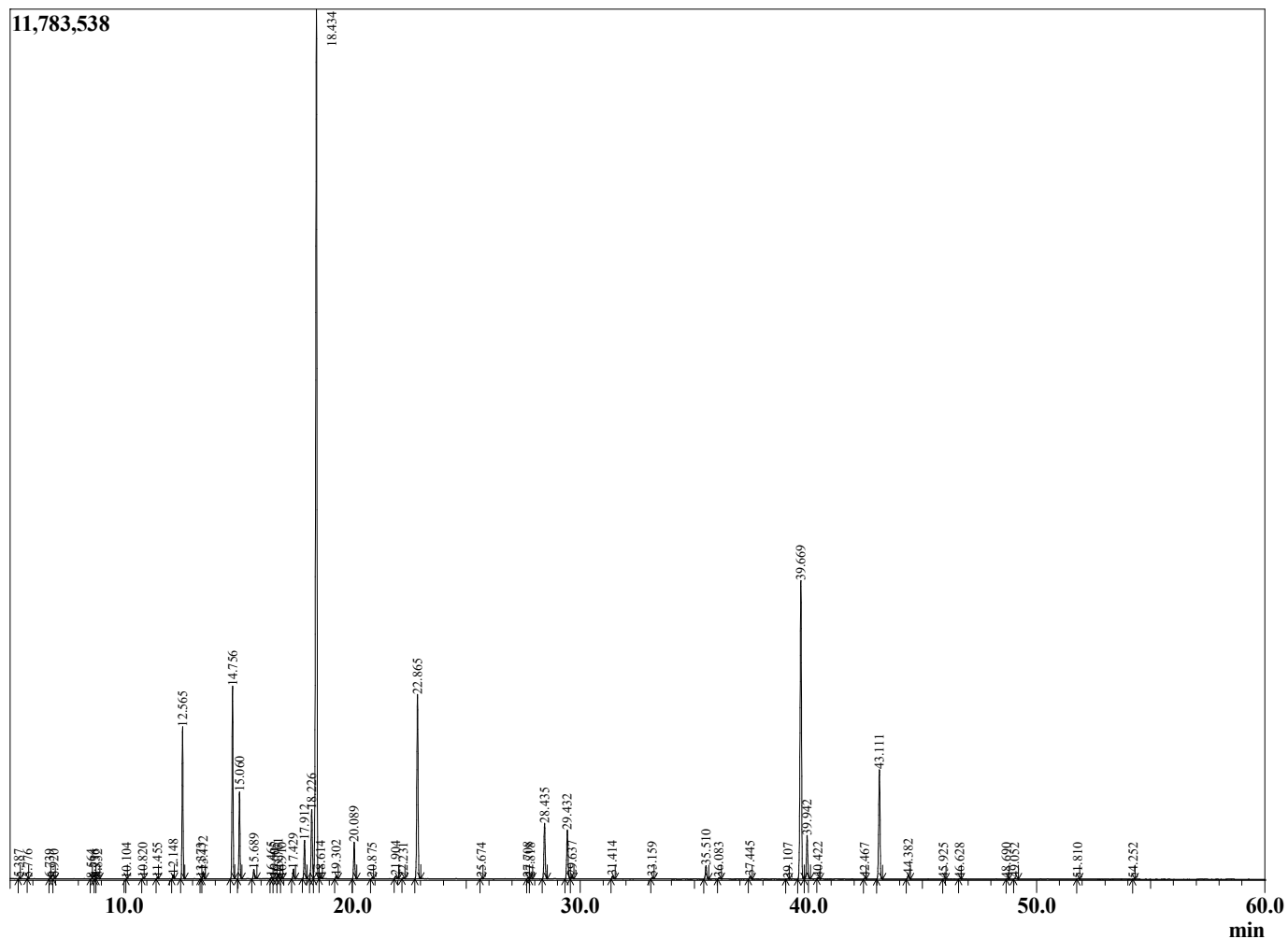
Sample Information

Sample Type : Essential Oil  
 Sample Name : Laurus nobilis  
 Injection : 0.10  
 Volume :

Laurel Bay  
 Lot# CRC23-CK  
 Country: Crete



Chromatogram Laurus nobilis



R.Time	Name	Area%
5.387	Methyl pyrrole	0.01
5.776	Ethyl isobutyrate	0.01
6.739	Isopropyl isobutyrate	0.01
6.920	Hexanal	0.02
8.564	Unidentified	0.01
8.736	Unidentified	0.02
8.832	Unidentified	0.04
10.104	Unidentified	0.01
10.820	Unidentified	0.02
11.455	Isobutyl isobutyrate	0.03
12.148	alpha-Thujene	0.14
12.565	alpha-Pinene	5.27
13.373	Unidentified	0.02
13.472	Camphene	0.26
14.756	Sabinene	7.01
15.060	beta-Pinene	3.22
15.689	Myrcene	0.39
16.465	Isobutyl 2-methylbutanoate	0.05
16.605	Unidentified	0.03
16.761	alpha-Phellandrene	0.18
16.910	delta-3-Carene	0.02
17.429	alpha-Terpinene	0.38
17.912	para-Cymene	1.55
18.226	Limonene	3.18
18.434	1,8-Cineole	39.38
18.614	cis-beta-Ocimene	0.08
19.302	trans-beta-Ocimene	0.12
20.089	gamma-Terpinene	1.47
20.875	trans-Sabinene hydrate	0.03
21.904	Terpinolene	0.13
22.231	Unidentified	0.03
22.865	Linalool	8.23
25.674	trans-Pinocarveol	0.03
27.708	delta-Terpineol	0.06
27.818	Borneol	0.04
28.435	Terpinen-4-ol	2.47
29.432	alpha-Terpineol	2.33
29.637	Estragole	0.11
31.414	Nerol	0.12
33.159	Linalyl acetate	0.06
35.510	Bornyl acetate	0.63
36.083	2-Undecanone	0.06
37.445	delta-Terpinyl acetate	0.12
39.107	Unidentified	0.02
39.669	alpha-Terpinyl acetate	14.90
39.942	Eugenol	1.95
40.422	Neryl acetate	0.06
42.467	beta-Elemene	0.04
43.111	Methyleugenol	5.29
44.382	beta-Caryophyllene	0.22
45.925	trans-Cinnamyl acetate	0.02
46.628	Unidentified	0.02
48.690	Unidentified	0.01
49.052	cis-Methyl isoeugenol	0.06
51.810	trans-alpha-Bisabolene	0.03
54.252	Unidentified	0.01

R.Time Name

Area%  
100.00